

New

ASS
Automations-Systeme



GRZ 14 R / Gripper

This new gripper fills the gap between the GRZ 10 and GRZ 20 size grippers.

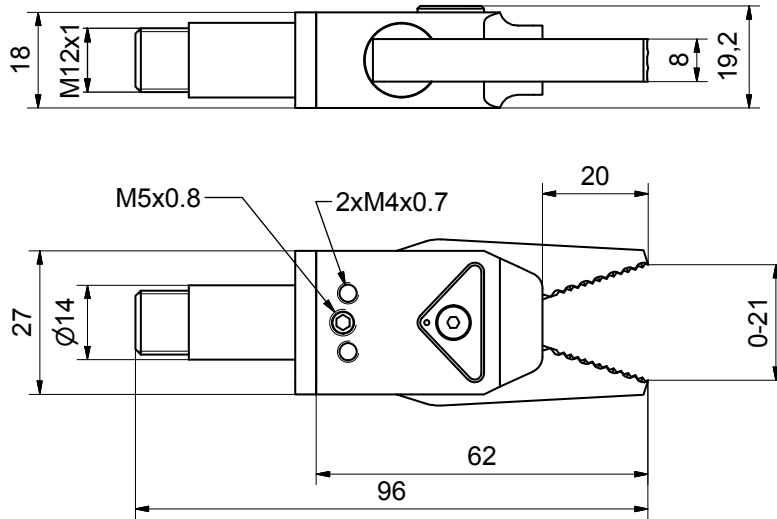
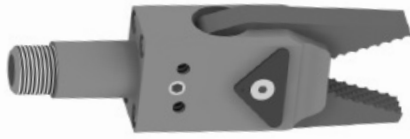
This new GRZ 14 is based upon the GRZ 20-20 design. It features a high closing force in a compact design. The gripper body is made from anodized aluminum. The gripper jaws are hard coated.

There are three mounting options. Clamping the 14 mm stem, using the M12 x 1 thread or two threaded holes in the housing. The gripper jaws are easily exchangeable.



Visit our homepage:
www.ass-automation.com

GRZ 14 R / Gripper with chequered jaws

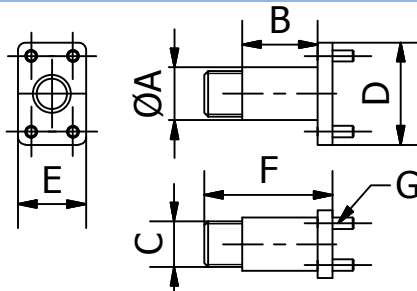


Remarks:

- fills the gap between the GRZ 10 and GRZ 20 size grippers
- high closing force in a compact design
- diverse mounting options
- gripper jaws are easily exchangeable

Part No.	Description	A	B	C	D	E	E1	F	G	H	Theoretical closing force at 6 bar [N]	Weight [g]
		[mm]	[mm]	[mm]	[mm]	[mm]	[mm]	[mm]	[mm]	[mm]		
1-414-00-00	GRZ 14 R	14	20	96	19,5	22	0	M12x1	19	27	75	65

AD GRZ 14 / Adaptor



Remarks:

- Adopt the GRZ 14 to GRZ 14-14 or GRZ 14-10.
- Compatible to VLR 10 or 14

Part No.	Description	A	B	C	D	E	F	G	Weight [g]
		[mm]	[mm]	[mm]	[mm]	[mm]	[mm]	[mm]	
1-414-10-00	AD 14 GRZ 14	14	20	M12x1	27	18	34	M3	13
1-414-12-00	AD 10 GRZ 14	10	15	M8x1	27	18	29	M3	10

To meet the highest level of quality, we build our components according to the EC machinery specifications. Each active product comes with an installation manual and/or a certificate of compliance.

